

Casoprano CASOSTAR

Gypsum ceiling tile for suspended ceilings

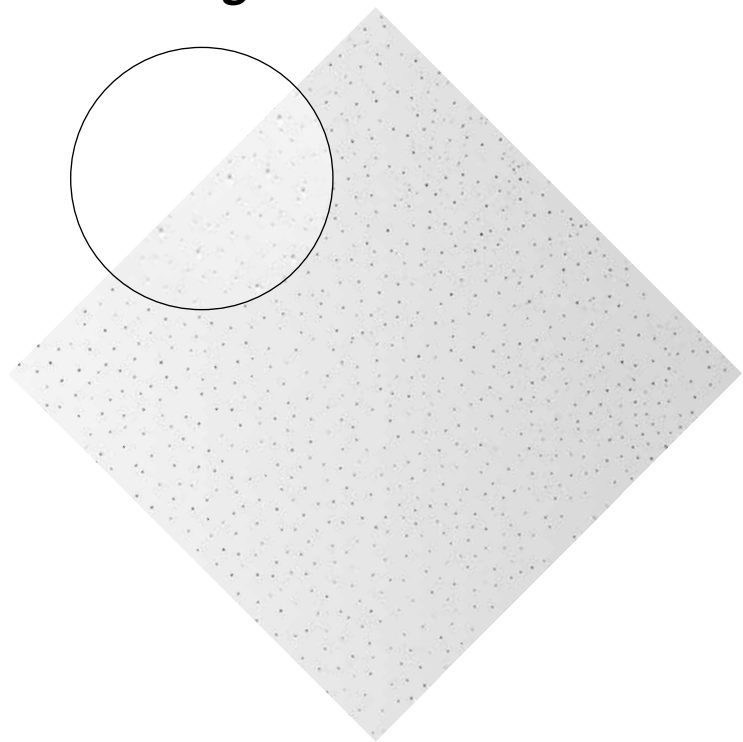
Product description

Ceiling panel made of the plaster board, of the white – flat color with fine, random perforation.
Colour – white, close to RAL 9010.

Usage

It should be used for making coffer suspended ceilings in interiors where the relative humidity does not exceed 90%. Because of its properties the product is recommended for the following rooms:

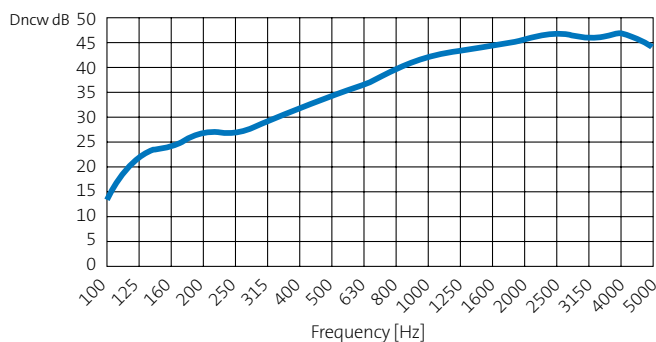
- Offices
- Hotels
- Schools
- Shopping properties
- Medical centers



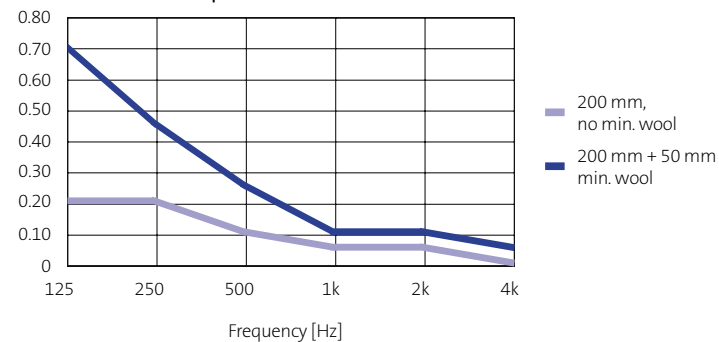
Properties

Model	Edge	Size (mm)	Weight (kg/m ²)	Fire reaction class	Sound absorption α_w	Sound insulation	Humidity resistance RH	Light reflection	Thermal insulation W/m ² k
CASOSTAR	A	600x600x8	6,60	A2	0,10	38 dB	90%	82%	0,23
		600x1200x8							

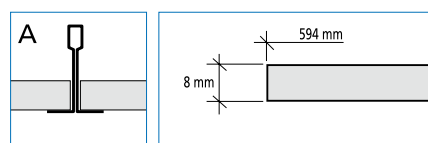
Sound insulation



Sound absorption α_p



Edge details



Advantages

- **Fire security** – CASOSTAR boards have excellent properties in the field of the reaction to fire. They are classified as the A2 material, which means “NON-INFLAMMABLE”
- **Air conditioning comfort in interior** – gypsum is an excellent regulator of the air humidity. By absorbing or eliminating the excess of humidity, gypsum softens the changes in the microclimate and protects our health
- **Hygenics and cleanness** – the boards are made of gypsum, which is the natural, mineral material. They do not produce dust; do not consist of dangerous fibers or other elements. They are safe during installation as well as during usage
- **High ceiling esthetics** – CASOSTAR boards have smooth, white surface with delicate punctual perforation and they are covered with the highest quality of painting
- **Durability** – CASOSTAR boards are very resistant to time flow, even in the conditions of higher humidity till 90%. During their usage they keep stability in shape, they do not deflect nor sag and keep the original color
- **Easiness of installation** – CASOSTAR boards are very easy to use in every construction of T24 and T15 grid type. High stiffness and proper weight of the boards make the grid leveling easier, whereas the high mechanical resistance limits losses and damages
- **Easiness of regeneration** – CASOSTAR boards can be easily cleaned with a vacuum cleaner or with a dump cloth (sponge) or be painted with all paints to change color as well as for renovation
- **Low cost** – CASOSTAR are characteristic for the low price

Renovation

The boards should be cleaned with a wet cloth (sponge). In case of the strong dirt the boards can be painted in a different color. In order to do that, the boards should be removed from the ceiling construction, placed on a flat surface and painted with a roller or brush. Acrylic paints are recommended. In case of different kind of paint, one should try it on a small surface first to check the accuracy of painting.

Ważne informacje

EN 14190

Montaż

Before the start of the tiles' installation, ceiling construction (grid) should be prepared first. The installation should be started with setting the ceiling level by the optical or laser leveler, water instrument can be used as well. Then we put the wall angle with the use of the stretcher spikes placed every 500 mm.

Places for main profiles L = 3600 are designed in a module of every 1200 mm, bearing in mind that the first and the last profiles must be detached from the wall not more than 600 mm.

After placing the main profiles we set the points for hangers (every 1200 mm), bearing in mind the fact that the distance from the wall of the first and the last hanger cannot be longer than 400 mm. For hanger fixing we use only metal fixing systems. After putting the main profiles (every 1200 mm) we place the long cross tees L = 1200 mm every 600 mm. Then between the long cross tees we place the short cross tees L = 600 mm. In such a way we obtain the grate of 600 mm x 600 mm, which we fill with the ceiling tiles in 10% and then we level it. Ceiling tiles we put in clean, cotton gloves in order to avoid making spots. After the process of leveling we top up all boards and then we cut the boards by walls.

To cut the ceiling tile properly, you should first slightly cut it at the visible side along the demanded line with the use of the fixing knife, then break the board and cut the paper on the bottom side (just like in case of the plasterboard).

Notice 1: it is recommended that the main profiles L = 3600 are installed in a parallel way to the daylight.

Notice 2: connection points of the main profiles should not come in a single line.